



THE LANTERN



NOVEMBER 2010

VOLUME 12, ISSUE 11



The Superintendent's Report

After adjusting the new NMRA logo hat that outgoing Superintendent Bill Paulsell graciously provided to all the new officers, and getting over the confusion about how to put my pants on, now that I'm the new Division 10 Superintendent, I started to think about what it means, but before I get into that, let me first lead a cheer for all the outgoing officers and committee chairmen: Bill Paulsell, Bill Robbins, Lou Jaquith and Tom Miller all served well and long as officers and in additional capacities, as did chairmen Ed Butcher, John Gorman, Wendell Greer, Fred Plymale, Larry Smith and Stew Winstandley. Moreover, all are continuing to serve in either the same, new, or expanded roles, along with new committee chairs Tom Bensberg, Tom Bookout, Mark Hunt, Brian Jones and Tom Krill. I've included the organization chart in this issue on page 3 for your future reference. I'd also like to recognize one of our mostly unsung heroes, Mike Armstrong, for writing the "Witless & Clueless" column. It's still the first thing I read in *The Lantern* every month.

I hope everyone enjoyed Sam Swanson's clinic on Seven Simple Structures at the October meeting as much as I did. Thanks, Sam, for coming to Lexington to give that clinic, and we certainly want you to come again when you have another.

November 7th we'll have the second in our trilogy of clinics on various aspects of scratchbuilding, this one by Eric Zabilka, whose clinics have been well received in many venues. We're looking forward to it, Eric.

Back to what it means to me to be Superintendent: Well, I'm obviously not in it for the money, and I didn't really volunteer for it, so what am I doing here? It really boils down to a realization of pay-back owed to all the past Division 10 officers who've served over the years. I've benefited from their service, as have we all, and it's time for me to do my part. They've given us clinics, tours, guidance, help, friendship and many other "bennies" since the Division started up under Fred Plymale's guidance in October 1999. Quoting from Fred in the first *Lantern*, back in November, 1999:

We have an excellent mix of experienced and novice modelers who are willing to "share what you know and learn what you don't." The newer modelers will benefit by learning from the members who are running their second and third layouts, and the experienced members will benefit from the satisfaction of helping others as well as gaining the recognition they deserve in the NMRA Achievement Program...The ultimate success of Division 10 is limited only by [our] vision of the future and the willingness of our members to share their skills by holding clinics and inviting fellow members to tour their layouts or collections. Members... can... contribute by working on a committee or other activity that could benefit from your expertise and input. Enthusiasm and ideas for growth are the only requirements needed to make a significant contribution to the success of our division.

It was a visionary statement back then, Fred. I hope we will all use it as a guide for service to the group, and I intend to give it my best. In the meantime, check out the activities in "Around The Bend." I hope to see you at several of them. **Notice the new time for Bring and Brag and the new auction.**

— Pete Birdsong



The Lantern is a monthly (except July) publication of Division 10, Mid Central Region (MCR), National Model Railroad Association. All opinions expressed herein are those of the authors, and do not necessarily reflect those of Division 10, the MCR, the NMRA, or anyone else.

Mid-Central Region Officers

- Dick Briggs, MMR, President
- Merlyn Jarman, Vice President
- Paul Smith, Treasurer
- Bob Weinheimer, Secretary

Division 10, MCR, Officers and Committees

- | | |
|---|---------------------------|
| Pete Birdsong, MMR, Superintendent | rrpeteb@gmail.com |
| 2308 The Woods Lane, Lexington, KY 40502 | 859 268 1462 |
| Bill Robbins, Asst. Superintendent | bandbbears2@insightbb.com |
| 4704 Sunny Point, Lexington, KY 40515 | 859 368 8308 |
| Lou Jaquith, Treasurer | bjaquith1@insightbb.com |
| 352 Greenbriar Road, Lexington, KY 40503 | 859 276 1358 |
| Stew Winstandley, Secretary | skw.monon@yahoo.com |
| 210 Brannon Road, Nicholasville, KY 40356 | 859 224 2122 |

Chairpersons:

- Edward Butcher, Conventions & Shows
- Fred Plymale & Bill Pausell, Creativity
- Pete Birdsong, Wendell Greer & Bill Pausell, Achievement Program
- Bill Robbins, Clinics & Tours
- Larry Smith & Fred Plymale, Modeling Programs
- Thomas Bookout, Sales
- Mark Hunt, Marketing & Advertising
- Tom Krill & Brian Jones, Door Prizes & Auctions
- John Gorman, Webmaster (<http://www.div10-mcr-nmra.org>)
- Stew Winstandley, *Lantern* Editor & Membership Database
- Tom Miller, Education
- Tom Bensberg, Member Profiles
- Pete Birdsong, Membership

In Recognition...

Many thanks to folks listed in the column below. They have given their time, materials and/or money to support our club. We encourage all NMRA members to help with financial support to *The Lantern* and our website and the Division 10 train shows. **Send your monetary contribution to our Treasurer.**

To be listed here your contribution needs to be at least \$20 in cash or material valued at \$50 or a total of 20 hours time within the last year. Division 10 receives NO monetary support from the NMRA or the Mid Central Region. Division 10 is recognized by the US government as a 501c3 corporation and your cash or material donations may be tax deductible.

Contributions of materials or time should be reported to Stew Winstandley so that he can keep track of them.

To the right of each contributing member's name is the date of his or her latest contribution. Whenever one makes a contribution of money, material or time, his or her date will be updated and for new contributors, their name will be added. Folks who have not made a contribution in one year will be dropped from the list.

Lou Jaquith	10/10
Alan Bourne	9/2010
Don Burris	"
Mark Hunt	"
John Gorman	9/2010
Tom Bensberg	"
Raymond Cox	8/2010
Ed Fuller	"
Ray & Renee Grosser	6/2010
John Bowling	"
David Battin	3/2010
Dennis Peevy	"
Bill Robbins	2/2010
Orville Boes	1/2010
Irv Frary	12/09
Franklin Miller	"
Bill Paulsell	"
Tom Krill	11/09
Ron Kercheval	"
Larry Smith	10/09

Treasurer's Report

Balance, Sept. 1, 2010	\$2659.10
Contributions	50.00
Expenses—Lantern	-53.16
Balance, Sept. 30 2010	\$2655.94

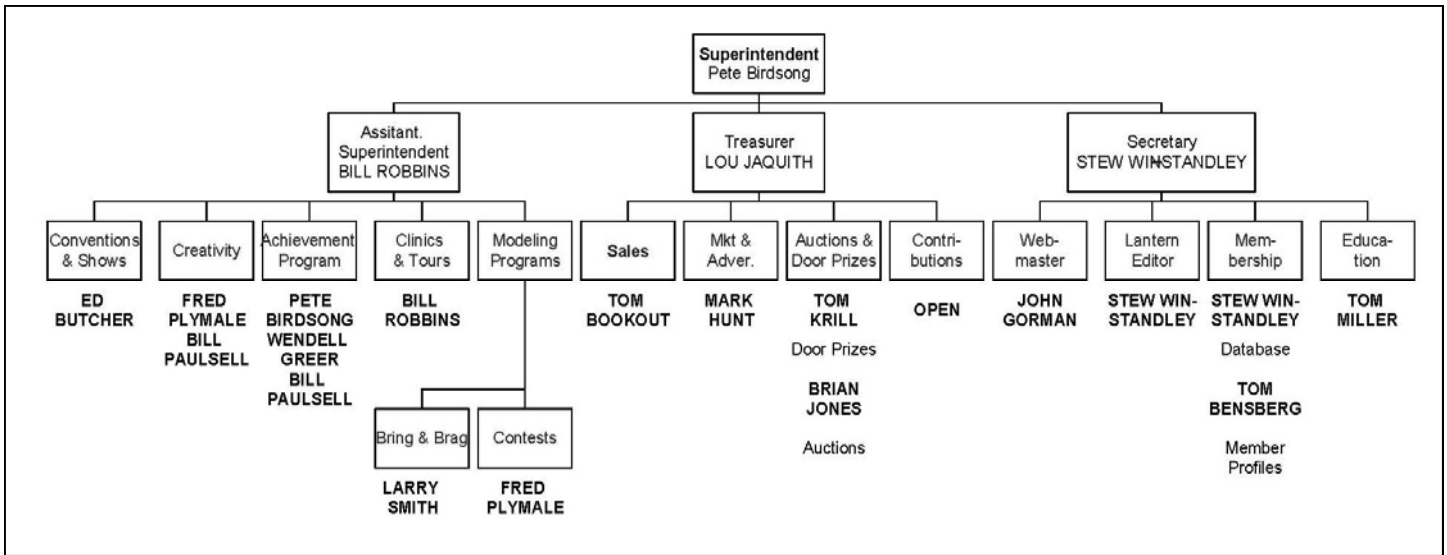
Division 10 is recognized by the US government as a 501c3 corporation and your cash or material donations may be tax deductible.

Scale Reproductions Hobby Shop

3073 Breckinridge Lane, Louisville, KY 40220 502 459 5849 www.srihobbies.com

HO & N Scales - NMRA members are eligible for our 10% discount

Weekdays 10 - 7:30, Saturday 10 - 5, Sunday 1 - 5



NMRA Headquarters just completed an analysis of our **RailPass Program** to see how many RailPass members went on to become full NMRA members. The statistics show that, since January 1, 2009, a whopping 65% have reupped!" That's just about 2 out of every 3 RailPass members who've stayed with us. A lot of the credit for that retention goes to everyone in our Regions and Divisions. You're making new members feel welcome, and you're showing them the benefits of NMRA membership

Bring and Brag

What a great start to Bring and Brag this year! Seven models! Thanks to everyone who brought a model to contribute and share with the members. Keep up the good work guys, and let's see as many or more models next month. And if you have never brought a model, please consider bringing one. I do not have a Bring and Brag topic for all the months at this time, so if you know of a topic that would entice you to bring a model, please share that topic with me.

The topic for October was revenue cars and we had a variety of different cars with the flat car being a popular choice. Pete Birdsong, our new superintendent, brought a flat with an old (or current for his layout) car on it. Don Burriss has a crane car loading a flat car with logs. Dave Batten contributed a flat car with tractors on it along with a coal car. Tom Krill brought a Huatusquito flat car and I had a flatcar with a grader on it. Lou Jaquith had a model of an Illinois Central passenger car and Ed Butcher brought some old mountain coal cars. It was an impressive showing and I am looking forward to November. The topic for November, now scheduled to begin at 1:30, is a model of your favorite **motive power**, steam, diesel, or electric. If you can think of another way to power an engine, you can bring that.

After the sheets were collected and tabulated, the scores for the month were as follows: Pete Birdsong 24.5, Lou Jaquith **26.4**, Don Burriss 16.3, Dave Batten 20.7, Ed Butcher 20.4, Tom Krill 18.4, and Larry Smith 20.5. As you probably remember, the score for each model represents the sum of the averages for the three categories of (1) Construction, (2) Detailing, and (3) Finish and Lettering scores.

The rules for Bring and Brag are on our website for Division 10, MCR. Future topics are on the last page of the *Lantern*. If you have any questions or comments, please contact yours truly, the Bring and Brag chairperson.

— Larry Smith (larry.ksmith@yahoo.com)



Cutoff Saw

Silent Auction

Nov 7th

Division 10 is instituting a quarterly auction of donated items. The Silent Auction will be setup prior to the 2 PM meetings at 1:30 PM, and bidding will conclude at the end of the meeting.

The November meeting will feature these quality items generously donated by Pete Birdsong, Superintendent, Div 10. If you want to get in good with "The Man", now's your chance.

HO (new in box NIB)

1 Accurail kit coal hopper MSRP \$12.95

N (NIB)

1 N Scale Architect Union City Station wood craftsman kit no longer in production MSRP \$75



Union City Station

Tools (lightly and lovingly used)

1 Harbor Freight miniature cutoff saw # 42307 MSRP \$27.99

MSRP is listed only as a guide to the value of the item.

Multiple items may be bid on singularly or as a group.

If you have items that are unwanted, unneeded, unloved, or stuff (railroad related ONLY, please), that you or your spouse just wants out of the house, contact Brian Jones (bcj1947@windstream.net).

2ND ANNUAL DIV. 10 DIORAMA PROGRAM

As a result of the success of last year's program and interest from members in building another diorama, we will introduce our second annual diorama program at the November meeting.

The minimum size will remain the same at 12x18 but no maximum for those interested in building a diorama in larger scales. The judging will take place at the March 6, 2011 meeting which allows plenty of time to plan and build your entry. Having your diorama judged the best is always fun but everyone who participates is a "winner" because they will develop skills that they can use in all future modeling activities.

Last years judging form is being modified to give you more space to describe how you built your entry and with more points available for Detail in this year's program.

30 points can be earned in Construction.

30 points can be earned in Detail.

20 points can be earned in Finish and Lettering.

20 points can be earned in Scratch building.

A foam base is recommended. It will permit you to demonstrate the use of water on your entry. A river with a bridge, pond, ditch, culvert or waterfall will add interest to the scene. Elevation, use of rocks, trees and people will also be judged for their realism. You can build as many structures as you need to make your scene realistic .

Good luck and great modeling to all who participate in this March program. It will be fun! — f.plymale@insightbb.com



WE HAVE EVERYTHING FOR THE ENTHUSIAST TO THE CASUAL MODEL RAILROADER. WE'RE ONLINE AT <http://h1072910.hobbyshopnow.com/train>. THE STORE IS OPEN 10 AM UNTIL 6 PM MON. TO SAT. AND 1 TO 5 PM ON SUNDAY. DISCOUNTS TO DIVISION 10 MEMBERS. 435 SOUTHLAND DRIVE, LEXINGTON, 40503, 243 0099

WITLESS AND CLUELESS

Written by Mike Armstrong

Rivets: Hey, Larry! Whatcha been up to?

Larry: Well, I just sent a email to some model manufacturers. I have come up with a great idea to get kids involved in model railroadin'.

Rivets: No kiddin'. What is it?

Larry: I was in the art store the other day and bought some puzzles.

Rivets: Let me guess. You want somebody to build some model train puzzles.

Larry: No, Rivets. Let me finish. These puzzles were blank. Ya painted your own picture, then ya took it apart and put it back together.

Rivets: So what?

Larry: My grandkids loved 'em. And remember at our last Division meeting the clinician was usin' one of those white boards ya can erase magic markers on?

Rivets: Yeah.

Larry: So I came up with this idea. Ya make a model train outta the stuff they make those erase able boards out of, put some of those erasable markers with it, and have the kids color it anyway they want. Then they can wipe it off and start again.

Rivets: That sounds like one of those ideas you come up with when yer sittin' in the bathroom.

Larry: That is where I do my thinkin'!

Rivets: What about the detail parts. As much as we handle our cars and engines, and as careful as we can be, things still get broken.

Larry: Well, ya have ta leave off most of 'em.

Rivets: Then all ya have is somethin' that looks like a white styrene box on wheels.

Larry: I think it would sell.

Rivets: So have ya heard back from anybody?

Larry: Yeah! I have heard back from several places.

Rivets: What did they say?

Larry: Well, Walters said they appreciated my idea, but they weren't ready to start a new line right now. They couldn't think of a name.

Rivets: I can: Walters' Train Line...as far from real as it gets.

Larry: Wathern said the same thing as Walters.

Rivets: That's because they are the same. Anybody else?

Larry: InterFountain said N scale was too small for that project. Aristocrat asked me if I was tryin' to ruin their reputation. Charlie Rohouse asked me if I had thought this through clearly. And Brockmann said they were afraid to ask me what MY layout looked like.

Rivets: Doesn't sound to promisin', does it.

Larry: There is hope. I got a response from Railroad Model Cratemakers who said that the idea sounded good, but unfortunately, they had articles planned well into the next century, but they did thank me.

Rivets: Larry, let's talk 'bout somethin' else.

Larry: Okay, ya want ta hear my idea about a functionin' ice house with real ice?

Rivets: Larry, let's talk 'bout somethin' else.



THE LANTERN

NEWSLETTER FOR NMRA MCR DIVISION 10

210 BRANNON RD.
NICHOLASVILLE, KY 40356-9711
WWW.DIV10-MCR-NMRA.ORG



BRING AND BRAG

1:30, YOUR FAVORITE
LOCOMOTIVE

AUCTION, SEE PAGE 4

NEXT MEETING


2 PM, NOV. 7, E SHORT ST,
ERIC ZABILKA,

SCRATCHBUILDING LESSONS

TOUR

WENDELL GREER,
212 SOUTHPOINT DR.,
LEXINGTON 40515

AROUND THE BEND

MON.	DAY	HOST	PLACE	EVENT / PROGRAM	TOURS	BRING & BRAG
Nov.	7	Div. 10	Watkins Bldg., Central Christian Church	1:30 Auction; 2 PM, Scratch building: Lessons Learned, Eric Zabilka	Wendell Greer	1:30, Your favorite locomotive
Dec.	5	Div. 10	Watkins Bldg., Central Christian Church, 2 PM	Techniques in scratch building, Renee Grosser	Joe Holbrook	Box Cars
Jan.	2	Div. 10	Watkins Bldg., Central Christian Church, 2 PM	Signals, Gerry Albers	Fred Plymale	No judging—Your favorite train Christmas present
Jan.	29	Div. 5	Convention Early Registration Deadline, Rail of Ages, Ohio	http://www.railsOfAges.org/Convention/early_registration_form.pdf	April 28—May 1	
Feb.	13	Div. 10	Watkins Bldg., Central Christian Church, 2 PM	Trees, Fred Plymale Ground Clutter, Pat Gerstle	Bob Larger	Structure you had the most fun building

The Mid Central Region is compiling a database of members who are available to give clinics. If you'd like to be included, please email the following information to Pete Birdsong (rrpeteb@gmail.com).

First & Last Name, City, State, Zipcode, Phone, Email, Title of clinic