



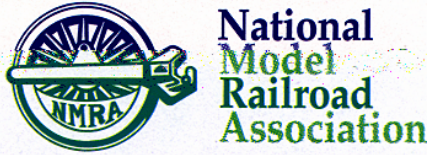
The Lantern



Volume 6 Issue 1

Division 10, Mid Central Region

January, 2004



The *Lantern* is a monthly publication of Division 10, Mid Central Region, National Model Railroad Association. Opinions expressed herein are those of the authors and do not necessarily reflect those of Division 10, the Mid Central Region, the NMRA, or anyone else.

Mid-Central Region Officers



President:

Howard Smith, MMR
3255 Big Run South Road
Grove City, OH 43123
614-871-0500
howardsmithmmr@aol.com

Secretary:

Ivan Baugh
9910 Shelbyville Road
Louisville, KY 40223
502-245-9816
ivbaugh@insightbb.com

Vice President:

Brian Petroziello
6341 Silverbell Ct
Clayton, OH 45315
937-837-7533
bpetroz@aol.com

Treasurer:

Judy Logan
6322 Mid Pines Ct.
Grove City, OH 43123
614-870-1433
logandj@earthlink.net

Trustee:

Michael C. Brestel
3208 Vittmer Avenue
Cincinnati, OH 45238
513-661-2141
mbrestel@eos.net

Division 10 Officers and Board

Superintendent:

Bill Robbins
4704 Sunny Point
Lexington, KY 40515
859-271-8839
bandbbears2@aol.com

Asst. Superintendent:

Fritz Dutro
306 Savannah Drive
Richmond, KY 40475
859-626-1876
fritzdutro@yahoo.com

Secretary:

John Gorman
143 Chenault Road
Lexington, KY 40502
859-269-3573
jgorman@lex-ky.us

Treasurer:

Fred Plymale
3463 Snaffle Road
Lexington, KY 40513
859-223-7270
f.plymale@insightbb.com

Board of Directors:

Wendell Greer
212 Southpoint Drive
Lexington, KY 40515
859-272-8731
dewvalley@juno.com

Board of Directors:

Pete Birdsong
2308 The Woods Lane
Lexington, KY 40502
859 268 1462
rpete@insightbb.com

Board of Directors:

Mike Armstrong
4809 Agape Drive
Lexington, KY 40514
859-296-4746
pikaa@peoplepc.com



Message From The Superintendent

Many thanks to Miles Hale and Bama Harmon for a very professional clinic on mold making. It was a great clinic and most of us were able to learn a lot from it. I encourage all of our members to attend our meetings as Fritz is bringing together some excellent programs. Our attendance Sunday was very good.

John Gorman reminds us that 2004 is almost here and the club will need financial support. To help us support you and your interests, please consider giving to the club for 2004. \$20 Patron or \$10 Sustaining member. Your donations will be for the costs of publishing and mailing our bulletin.

Train show #2 last spring had about 330 attendees, and 70 tables rented. The first show about 220 came and we rented 57 tables. Both shows were profitable. Train show #3 is scheduled at the Knights of Columbus on November 13th, 2004. All members of the club who worked on the show deserve recognition for the hard work they did to make the show a success. We still have some club cars for sale at \$15 each. They are 40' C&O box cars, dated for 1937 and 1952.

Turfland Mall has offered us 21x23 foot store fronts, free of charge, if we would run trains for the public. I have turned down the offer, because I could not get enough members to committ to manning the layout. We would have to run on Tuesday night and Saturday (10:00-4:00) and Sunday (12:-4:00). If I get more response from you members, I would be glad to go back and talk to them.

I have been approached by a representative from the Legend's ball club, to possibly set up and run a layout at the ball park. We might want to build a model of the park. There was enough interest at our meeting for me to try and get more information and details. I will try to do that.

Don't forget to fill out Fritz's 2004 survey!

-Bill

Bring n' Brag December 2003

We had a banner year for Bring n' Brag with a good number of outstanding models and photos entered. Although most of the points were earned by a small number of modelers and photographers, we should be inspired rather than intimidated by their efforts. Our newly instituted Show and Tell has been a big hit! We will continue Bring n' Brag and Show and Tell for 2004.

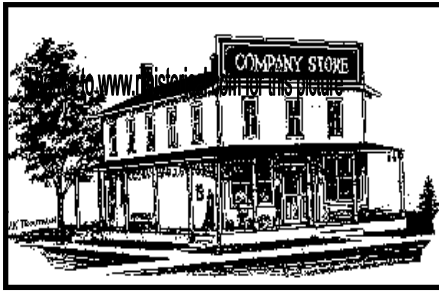
Also, we will have a Sale and Swap table starting with January 2004. Those who have items they wish to sell or trade can have an alternative to eBay or having to wait for the next train show. Who knows, that item you have been wanting just might show up one Sunday!

This month's B 'n B category was open loads including intermodal. In modeling, Mike Walter had a sharp looking N scale array of double stacks and lumber loads. Fritz Dutro entered a super detailed and weathered cut of W&LE gondolas, and Bill Robbins showed a nice ATSF wide cab diesel and double stack train. The results for December's modeling reflect the year end total. Fritz was the overall winner, Mike came in second, and Bill came in third.

In photography, Fritz Dutro entered a nice black and white layout scene of W&LE hoppers and John Lathrop had four interesting digital photos of Thurmond, WV. Fritz came in first and John was second. Year end totals are: Fritz - first place, Randy Coffman second place, and there was a tie for third between Bill Robbins and Howard Coleman. See all of the totals on page two.

Year End Plaques will be awarded at January's meeting as well as certificates for December. January's subject will be Houses and Farm Buildings. February will be Steam Locomotives and March will be Non-revenue (Including Cabooses and Maintenance of Way). We will have the schedule for the rest of 2004 next month as we are considering some new categories. Any input or suggestions are welcome.

-Ron Kercheval



“STUFF” & OPPORTUNITIES

Mike Armstrong occasionally knows of *members’ overstock* situations and other opportunities to acquire or dispose of “stuff.” Get in touch with him to find out what’s currently available. These liquidations, generally via a web auction, bear a 15 to 20% fee.

In addition, *The Lantern* is in a position to advertise your “overstock” items, for a fee of 10%.

Contact Mike Walter to arrange for an ad, or Mike Armstrong for liquidations.

Committee Chairs

Achievement Program	David Greer
Advertising	Mike Walter
Community Activities	Open
Company Store	Chris Cord
Contests	Ron Kercheval
Conventions & Shows	Fred Plymale
Editor & Webmaster	John Gorman
Estate Liquidations	Mike Armstrong
Member Aid	Wendell Greer
Membership	Wendell Greer
Photographer	Pete Birdsong
Programs	Fritz Dutro

In Appreciation....

Many thanks to our Sustaining and Patron members for 2003. It is time to make your donations for 2004. (Sustaining members contribute \$10.00 per year, and Patrons \$20 or more.) We encourage all members to help support *The Lantern* and our website.

2004 PATRONS

2004 SUSTAINING MEMBERS

2003 Final Bring n’ Brag Scores

MODELS

PHOTOS

High to Low or Tie	Dec.	YTD	High to Low or Tie	Dec.	YTD
Fritz Dutro (1st)	5	46	Fritz Dutro (1st)	5	46
Mike Walter (2nd)	4	34	Randy Coffman		30
Bill Robbins (3rd)	3	21	Howard Coleman		6
Bob Lawson		19	Bill Robbins		6
Howard Coleman		9	Pete Birdsong		5
Pete Birdsong		5	Mike Baskette		4
Mike Baskette		4	Tony Lucio		4
Chris Cord		4	John Lathrop (2nd)	4	4
Pat Gerstle		4	David Reed		3
Ray Grosser		4	Ron Kercheval		3
David Reed		4			
Tony Lucio		4			
Peter Bourne		3			



BERKSHIRE TRAINS
 Lionel • MTH • K-Line
 O • HO • N • Model Trains
 BURT BRASHEAR • Owner

**Special
 Orders
 Available**

- MTH & Lionel Complete Sets
- Track & accessories, Box Cars, T-Shirts
- Layaway available
- MC/VISA/Discover

209 Rosemont Garden
 Lexington, KY 40503
 (859) 278-8082
 Toll free: 877 609-0695
 FAX: (859) 873-6863

Summer Hours:
 Mon - Fri.: 1:00 to 6:00
 Saturday: 11:00 to 5:00
 Sunday: Closed

DAVID GRIFFIN
**BLUEGRASS MODEL
 RAILWAY SUPPLY**



SPECIALIZING IN HO AND N SCALE

BOOKS
 VIDEOS
 MAGAZINES
 ACCESSO-
 RIES
 COMPLETE
 TRAIN SETS
 SPECIAL
 ORDERS
 PERSONAL
 SERVICE

Dealer for brass at
 20% off retail:
**Overland Models
 Hallmark
 Key Imports**

Garden Springs Shopping Center
 Mon-Sat 10:00 - 9:00; Sun 1:00 - 7:00

820 Lane Allen Road Lexington, KY 40504
 859 276 4240 1 888 797 3938

Support Our Local Hobby Shops

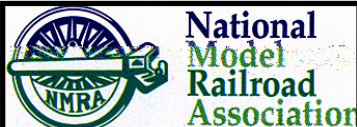
Our advertisers are supporting us with their ads, so let's support them with our business! A strong retail network is vital to keeping the hobby visible to the public, and provides valuable help to newcomers. By our patronage of their stores, they are able to continue bringing more people into the hobby, and promoting our organization.....

win-win!!

**Scale
 Reproductions**

3073 Breckinridge Lane McMahan Plaza
 Louisville, KY 40220
 (502) 459-5849 brian@sri.win.net

- Specializing in HO and N scale model railroading
- Large selection of accessories, decals, detailing parts and reference.
- Large selection of DCC items including Digitrax, Lenz, NCE and more!
- Most items 10%-20% off retail price everyday.
- We also give an additional 10% discount to NMRA members!!
- Special order and mail order service available.



AROUND THE BEND

MON	DAY	EVENT	PLACE/TIME	PROGRAM	TOUR	CONTEST
JAN 2004	4	MCR DIV 10	Tates Creek Library	Fritz Dutro Cheap and easy coal loads for hoppers and gondolas. & Rolling stock weathering	NONE	Houses & Farm Buildings
FEB 2004	1	MCR DIV 10	Tates Creek Library	John Gorman	To Be Announced	Steam Locomotives
MAY 2004	13-16	MCR Convention	Four Points Sheraton, Cranberry, PA	Contact Div 2 for more information		
JULY 2004	4-11	NMRA Nat'l Convention	Seattle, WA	See Website for full details: http://www.nmra2004.org/		

Next Meeting:
Tates Creek Library
Lexington, KY
January 4
Sunday, 2:00 pm

Program:
Fritz Dutro on
Cheap and Easy Coal
Loads for Hoppers and
Gondolas
&
Rolling Stock Weathering

Bring & Brag:
Houses and
Farm Buildings



Happy New Year!



*Don't Forget the
NEW
Sale & Swap
Program
at
January's Meeting*

The Lantern

Published most months by Division 10
Mid Central Region
National Model Railroad Association
143 Chenault Road,
Lexington, KY 40502
jgorman@lex-ky.us
On-Line: nmra-division10.railfan.net/



STAMP

!! This Month !!
**Bring a Hopper
or Gondola and
Make Your Own
Coal Load with
Fritz Dutro**
