



The Lantern



Volume 5 Issue 10

Division 10, Mid Central Region

October, 2003



**National
Model
Railroad
Association**

The *Lantern* is a monthly publication of Division 10, Mid Central Region, National Model Railroad Association. Opinions expressed herein are those of the authors and do not necessarily reflect those of Division 10, the Mid Central Region, the NMRA, or anyone else.

Mid-Central Region Officers

Trustee:

Michael C. Brestel
3208 Vittmer Avenue
Cincinnati, OH 45238
513-661-2141
mbrestel@eos.net

President:

Howard Smith, MMR
3255 Big Run South Road
Grove City, OH 43123
614-871-0500
howardsmithmmr@aol.com

Vice President:

Secretary:

Pete Birdsong
2308 The Woods Lane
Lexington, KY 40502
859 268 1462
rpete@insightbb.com

Treasurer:

Judy Logan
6322 Mid Pines Ct.
Grove City, OH 43123
614-870-1433
logandj@earthlink.net

Division 10 Officers and Board

Superintendent:

Bill Robbins
4704 Sunny Point
Lexington, KY 40515
859-271-8839
bandbbears2@aol.com

Asst. Superintendent:

Fritz Dutro
306 Savannah Drive
Richmond, KY 40475
859-223-7270
fritzdutro@yahoo.com

Secretary:

John Gorman
143 Chenault Road
Lexington, KY 40502
859-269-3573
jgorman@lex-ky.us

Treasurer:

Fred Plymale
3463 Snaffle Road
Lexington, KY 40513
859-223-7270
f.plymale@insightbb.com

Board of Directors:

Wendell Greer
212 Southpoint Drive
Lexington, KY 40515
859-272-8731
dewvalley@juno.com

Board of Directors:

Pete Birdsong
2308 The Woods Lane
Lexington, KY 40502
859 268 1462
rpete@insightbb.com

Board of Directors:

Mike Armstrong
4809 Agape Drive
Lexington, KY 40514
859-296-4746
pikaa@peoplepc.com



Message From The Superintendent

I would like to introduce our newest members: Tony and Anna Lucio. They enjoy model railroading and are a welcome addition to NMRA and our club. Welcome to the club.

I would like to thank Chris Cord for his program and dispatching and operations. It was good to hear from someone who actually works with the real thing. Thanks Chris.

Be sure you reserve November 15th for our train show. It will be a great show. We will have our first club car for sale. It is a 40' C&O box car from 1937 and

(Continued on page 4)

Notes from Fritz

New Show and Tell Program: As those of you who attended the September clinic have heard we are instituting a new segment in our monthly Meetings: Those attending are invited to bring a recent modeling project to display during the meeting and are asked to give a quick 30 second talk about their model. These models will not be judged as part of the Bring and Brag but will allow those of us attending to see more modeling efforts by our peers.

Bring out those boxcars and buildings you've recently completed to the October show and show the rest of us how it's done. Thanks and looking forward to seeing you at the clinic.

(Continued on page 4)

NMRA Achievement Program Explained!

This month's Achievement Program topic will be about the Model Railroad Engineer – Civil category. As you might expect from the title this category pertains to mechanical things on your layout. Don't be frightened by the title, you don't need to have an engineering degree from UK or even UT to successfully complete the requirements for this category. If you can design a track plan and hand lay some track you can earn this certificate.

The first requirement is to prepare a scale drawing of a track plan. This plan should include appropriate terminal facilities for passengers and freight. These terminals should be designed in a logical way so they would function like the prototype. The plan should also include an engine facility. The facility does not have to be complex but should be able to service and store a few locomotives. All the terminals should be

(Continued on page 4)

Contents	
1	Officer Listing Superintendent's Message Notes from Fritz NMRA AP Explained
2	Company Store Committee Chairs Witless vs. Clueless
3	Support Your Hobby Shops Sustaining Members & Patrons
4	NMRA MCR Division News Notes from Fritz (continued) Superintendent's Message (cont'd) AP Explained (continued) The Company Store Report
5	Bring n' Brag Report Bring n' Brag 2002 Winners & Schedule Treasurer's Report
6	Division 10 Model Railroad Data Base Division 10 Fall Train Show Information
7	Around The Bend Editor's Note



“STUFF” & OPPORTUNITIES

Mike Armstrong occasionally knows of *members’ overstock* situations and other opportunities to acquire or dispose of “stuff.” Get in touch with him to find out what’s currently available. These liquidations, generally via a web auction, bear a 15 to 20% fee.

In addition, *The Lantern* is in a position to advertise your “overstock” items, for a fee of 10%.

Contact Mike Walter to arrange for an ad, or Mike Armstrong for liquidations.

Committee Chairs

Achievement Program	David Greer
Advertising	Mike Walter
Community Activities	Open
Company Store	Chris Cord
Contests	Ron Kercheval
Conventions & Shows	Fred Plymale
Editor & Webmaster	John Gorman
Estate Liquidations	Mike Armstrong
Member Aid	Wendell Greer
Membership	Wendell Greer
Photographer	Pete Birdsong
Programs	Fritz Dutro

Witless vs. Clueless

The Continuing Railroad Adventures of Rivets O’Reilly and Larry Loungecar



Created by ‘Railroad’ Pete Birdsong
Written by Mike Armstrong

Rivets: Hi Larry! Ya got your garden railroad critter problem figured out yet?

Larry: Yeah, Rivets, I do. I just finished my “m. o. c.” car that should solve all my critter problems! Come on out back and take a look.

Rivets: What is a “m. o. c.” car? Have you got a spray car to get rid of the all the overgrown plants and flowers?

Larry: Nope! I got somethin’ better and it’s fool proof! I am just gettin’ ready to test it out.

Rivets: If you’re just gettin’ ready to test it out, how do ya know it’s fool proof?

Larry: Because I know. Come and see!

Rivets: Larry, that looks like a swivel vice mounted on a flat car with a bb gun in its grip.

Larry: Well, you are almost right. This is my new invention. I call it an “m. o. c.,” a “maintenance of critter” car. What do ya think?

Rivets: Right now, Larry, ya don’t want to know what I think!

Larry: I admit, I had a few bugs to work out, but now it is gonna do great!

Rivets: What bugs?

Larry: Well, at first I tried tying a string to the trigger. That way I could pull it and swivel it to aim it at the critters. I don’t wanna kill ‘em. I just want to scare them away.

Rivets: And how did that work?

Larry: Well the string got all tangled at the over and under figure eight and pulled the train off the track. So, I tried working a rubber band instead of string. I tied a whole bunch of thick ones together, like ya get at the post office. If it caught at the figure eight, it would stretch and the train would keep on goin’.

Rivets: And?

Larry: Well, the rubber bands stretched and let go, stretched and let go. BBs were flyin’ everywhere.

Rivets: Accounting for the welts on your face?

Larry: Sort of. But this time I have it. I put DCC with a remote control on the swivel. I can aim it any where. AND I put this hand car right behind the flat with the gun. Every time the crew bends over a BB fires.

Rivets: Excuse me, Larry.

Larry: Where ya, goin’? Don’t ya want to see it work? I’m headin’ into the tunnel where the chipmunks have made a home.

Rivets: Go right ahead. I’m findin a tree!

Larry: Rivets! Where is your sense of adventure? All I have to do is . . . OOOWWW!!!





BERKSHIRE TRAINS
Lionel • MTH • K-Line
O • HO • N • Model Trains
BURT BRASHEAR • Owner

**Special
Orders
Available**

- MTH & Lionel Complete Sets
- Track & accessories, Box Cars, T-Shirts
- Layaway available
- MC/VISA/Discover

209 Rosemont Garden
Lexington, KY 40503
(859) 278-8082
Toll free: 877 609-0695
FAX: (859) 873-6863

Summer Hours:
Mon - Fri.: 1:00 to 6:00
Saturday: 11:00 to 5:00
Sunday: Closed

DAVID GRIFFIN

**BLUEGRASS MODEL
RAILWAY SUPPLY**



SPECIALIZING IN HO AND N SCALE

**BOOKS
VIDEOS
MAGAZINES
ACCESSO-
RIES
COMPLETE
TRAIN SETS
SPECIAL
ORDERS
PERSONAL
SERVICE**

**Dealer for brass at
20% off retail:
Overland Models
Hallmark
Key Imports**

**Garden Springs Shopping Center
Mon-Sat 10:00 - 9:00; Sun 1:00 - 7:00**

820 Lane Allen Road
859 276 4240

Lexington, KY 40504
1 888 797 3938

In Appreciation....

Many thanks to our Sustaining and Patron members for 2003 listed below. (Sustaining members contribute \$10.00 per year, and Patrons \$20 or more.) We encourage all members to help support *The Lantern* and our website. A number next to a name indicates a second or subsequent donation.

2003 PATRONS

Mike Armstrong	Pete Birdsong	Alan Brock
Howard Coleman	John Deville	Fritz Dutro
John Gorman	Wendell Greer	Robin Grider
Ray & Renee Grosser	Lou Jaquith	Ron Kercheval
Skip Keyser	Bob Lawson	Bill Paulsell
Fred Plymale	David Reed	Bill Robbins
Ron Saylor	Mike Walter	

2003 SUSTAINING MEMBERS

Richard Crane	Phil Ditchen
---------------	--------------

Scale Reproductions

3073 Breckinridge Lane McMahan Plaza
Louisville, KY 40220
(502) 459-5849 brian@sri.win.net

- Specializing in HO and N scale model railroading
- Large selection of accessories, decals, detailing parts and reference.
- Large selection of DCC items including Digitrax, Lenz, NCE and more!
- Most items 10%-20% off retail price everyday.
- We also give an additional 10% discount to NMRA members!!
- Special order and mail order service available.

Support Our Local Hobby Shops

Our advertisers are supporting us with their ads, so let's support them with our business! A strong retail network is vital to keeping the hobby visible to the public, and provides valuable help to newcomers. By our patronage of their stores, they are able to continue bringing more people into the hobby, and promoting our organization.....

win-win!!

NMRA MCR Division News

On October 12 there will be a Mid Central Region Board of Directors meeting and election of interim vice president to fill vacancy left by Louie Dalton's recent move. Our Division 10 Secretary, John Gorman has been nominated for the position.

-Pete

Notes from Fritz (Continued from page 1)

October Program: This month we are delighted to have 'Master of the Diorama' Bob Lawson presenting his clinic on Dioramas and adding buildings to your layout. Those of you who read the sidebar in the recent Model Railroader magazine featuring Bob's layout got a sense of how impressed the staff of MR was with Bob's diorama techniques.

After the clinic we will be touring Bill Robbins' layout. Bill continues to add scenery and structures to the layout (and I've heard one or two steamers) so plan on visiting.

The next three months will be featuring excellent clinicians and I am expecting heavier than usual turnouts for those meetings. We still need layout tours for both November and December so contact me if you want to get on the schedule. I will also be handing out survey forms during these meeting to gauge what clinics would be of interest for next year.

Thanks again and I look forward to seeing you at the meeting.

-Fritz

Super's Message (Continued from page 1)
1952-54. We would like to have a good showing from our members: to attend the show, help us run the show, and rent a table. Don't miss the opportunity to have an exciting day and perhaps buy more train stuff. If you would like to rent a table, contact Fred Plymale. If you can help us at the show Friday night and/or Saturday, or have any questions, feel free to give me a call.

Fritz Dutro and Ron Kercheval are initiating a new concept at our monthly meetings. It will be non-competitive "show and tell". It will give you a chance to share some modeling experiences with the group but without the pressure of competing against others. I hope to see a lot of interesting projects.

I would like to mention our Tuesday night meeting group. Everyone is welcome. We meet at a different house each time. It is strictly socializing and talking about model trains. Any member can give you more details.

-Bill

AP Explained (Continued from page 1)

designed in keeping with the theme of your plan. The track plan must also include at least one passing siding and at least four spurs for switching. Your track plan must also have a way to turn motive power; either a turntable, a wye, or a reversing loop and be able to support at least two mainline trains operating in opposite directions. The drawing of your plan does not have to be done on a computer, but it should be neat and legible with the size, scale, track elevations, curve radii and turnout sizes indicated.

The second part of the requirement for

MR Engineer – Civil is to build and operate all or part of your track plan. You are required to build an amount of track in proportion to the scale you are modeling, 25 linear feet if in Z, N, or TT, 50 linear feet if in HO or S, 75 linear feet if in O, or 100 linear feet if in G. This track must have appropriate roadbed profile with drainage and ballast. Your track work will be judged based on conformity to prototype practice and construction quality. Your track work must contain examples of six different track features. Track features are defined as things such as a spur, a crossover, a passing siding, a turntable, a simple ladder, etc. A complete list can be found in part 2 of the requirements. Remember you can obtain any of the Achievement Program requirements from the national NMRA web site (www.nmra.org). This section of the requirements do not need to be judged, only witnessed that they work.

The third part of the requirements is to scratch built models of three track features. You can use commercial rail, ties, spikes, and ballast, but not commercial frogs. The track features do not have to be part of your layout or even of the same scale. However, you do have to demonstrate their satisfactory operation by running an engine through them under their own power and must meet NMRA standards. These track features need to be Merit Judged and earn at least 87.5 points.

If you decide to pursue this category you will learn about prototypical terminal design, prototypical track work, and develop your skills at hand laying track. The more you learn the more fun model railroading will be.

-Dave

The Company Store Report

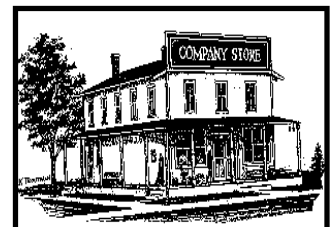
At the **August** meeting two members graciously donated several items to be given out as door prizes in addition to our normal prize of gift certificates.

Randy Coffman donated two of his company's clamps and Bob Lawson donated several kits. Congratulations to all the winners!

The company store is currently looking for new items to add to our stock. If you would like to see anything added

contact Chris at a meeting, I'll be the guy holding the door prize tickets!

-Chris



Bring n' Brag September, 2003

After two great meetings in the field this summer we met back at the Beaumont Library branch. I guess we were due for a letdown as there were only two modeling entries and three photos. This was surprising, as this month's theme was diesel locomotives, a normally popular subject.

First, Fritz Dutro entered a three unit lashup of Wheeling and Lake Erie electric motors that had awesome detail and weathering. They sat on a diorama complete with overhead catenary. Tony Lucio had a sharp looking HO scale Chessie GP40 with a great super-detailing job. Fritz took first and Tony came in second.

There were three photo entries: Fritz Dutro had a great layout photo of a train led by three W&LE motors (different road numbers from his model entry!), Ron Kercheval entered a couple of photos of a CSX wreck train with an orange GP40 and an ex-C&O hopper in ballast service, and Tony Lucio had a nice enlargement of the 2000 CSX Kentucky Derby train. Fritz was first, Tony took second, and yours truly was third. Hats off to Tony for his first efforts!

Congratulations and a big thanks to those who entered! Award certificates will be handed out at the next meeting on October 5. The category for October is Commercial Structures. See you then!

- Ron Kercheval

Treasure's Report

The balance in our checking account is \$3,876.45.

As of this date (9-25) we have only two tables rented for the November train show.

- Fred

2003 Bring n' Brag Scores

MODELS			PHOTOS		
High to Low or Tie	Sept.	YTD	High to Low or Tie	Sept.	YTD
Fritz Dutro (1st)	5	37	Fritz Dutro (1st)	5	36
Mike Walter		23	Randy Coffman		30
Bill Robbins		16	Howard Coleman		6
Howard Coleman		9	Bill Robbins		6
Bob Lawson		9	Pete Birdsong		5
Pete Birdsong		5	Mike Baskette		4
Mike Baskette		4	Tony Lucio (2nd)	4	4
Chris Cord		4	David Reed		3
Pat Gerstle		4	Ron Kercheval (3rd)	3	3
Ray Grosser		4			
David Reed		4			
Tony Lucio (2nd)	4	4			
Peter Bourne		3			

Bring n' Brag Schedule for 2003

Oct. - Commercial Structures: Industrial, businesses, municipal.

Nov. - Passenger Cars

Dec. - Open Loads: Flat Cars, Gondolas and Intermodal

Division 10 Model Railroad Data Base - Bill Robbins' Sunny Point & Southern

Returning from our summer road trip we continue with the Division 10 Model Railroad Data Base. This month we will visit the Sunny Point & Southern model railroad. Bill Robbins, our Division Superintendent has been working on the Sunny Point & Southern since 1996. It has five operating positions and with the soon-to-be installed Digitrax DCC control system Bill will have the ability to provide the road engineer with a roving throttle.

The Sunny Point & Southern is open for operations on the third Tuesday evening of the month bi-monthly. Check with the scroll at the bottom of the web site to find out about the next session. It is usually posted several days before the operating session. If you are interested, don't worry about having experience. Bill will make sure you learn all you need so your evening of operating is a great one.

-John

Bill Robbins

Sunny Point & Southern



Name: Sunny Point & Southern

Size: HO - 1:87

Period: Steam to Modern

Location: Western United States

Style: Operations orientated. Mainline and branch switching.

Height: 40" Mainline 44" Upper Branch

Bench work: L Girder, flat table, plywood & Homosote

Track: Code 100 flex track and snap track

Mainline Length: Approximately 130 feet

Turnouts: Atlas manual and powered

Radius: 24" minimum

Grade: 2% maximum

Scenery: : Roads and ground painted, Woodland Scenics ground cover added. Many Woodland Scenics castings. All structures are hand painted with details added. Structures are plastic and wood.

Control: DC - Digitrax DCC being installed

Roster: UP and ATSF diesels. UP steam. 15 diesels ready for DCC

Comments: SP&S was started in 1996. It is free lanced with the west in mind. The layout is designed for operations utilizing at least 6 operators. Any theme from steam to modern can be displayed. The layout is complete, but more scenery and details will be added. The layout is analog controlled, but the plan is to add DCC also.

NMRA DIV. 10 TRAIN SHOW & SALE

SATURDAY, NOV. 15, 2003 10AM-4PM

KNIGHTS OF COLUMBUS HALL

1604 VERSAILLES RD., LEXINGTON, KY

- ▶ MODEL TRAINS FOR SALE IN ALL SCALES
- ▶ LARGE ESTATE SALE
- ▶ LIMITED EDITION DIVISION 10 'CLUB CAR' AVAIABLE
- ▶ OPERATING LAYOUTS AND DISPLAYS
- ▶ MANY DEALERS AND INDIVIDUAL VENDORS
- ▶ FREE REGISTRATION FOR DOOR PRIZES
- ▶ FREE 'HOW TO' CLINICS
- ▶ FREE USE OF ENGINE TEST TRACK

Contact Fred Plymale at 859-223-7270 or f.plymale@insightbb.com for more details & table rental.

Division 10 is a 501c3 corporation. We appraise and sell estates. Donations could be tax deductible.



AROUND THE BEND

MON	DAY	EVENT	PLACE/TIME	PROGRAM	TOUR	CONTEST
OCT	5	MCR DIV 10	Eagle Creek Library off of Richmond Road Sunday, 2:00 pm	Bob Lawson Dioramas and putting build- ings into the ground	Bill Robbins' Sunny Point & Southern	Commercial Structures: Industrial, businesses & municipal.
OCT	10	BGRRC	Meadowthorpe Community Ctr. Lexington, KY Friday, 7:30 pm	A film presentation by Wes Ross		
NOV	2	MCR DIV 10	Beaumont Library, Lexington off of Harrodsburg Road Sunday, 2:00 pm	Sam Swanson on Finishing and detailing models	To Be Announced	Passenger Cars
NOV	15	Division 10 Annual Fall Train Show	Knights of Columbus 1604 Versailles Road Lexington Kentucky	Watch This Space for More Information		
DEC	1	MCR DIV 10	To Be Announced	Miles Hale Mold making and casting small detail parts	To Be Announced	Open Loads: Flat Cars, Gondolas and Intermodal.
MAY 2004	13-16	MCR Convention	Four Points Sheraton, Cranberry, PA	Contact Div 2 for more informa- tion		
JULY 2004	4-11	NMRA Nat'l Convention	Seattle, WA	See Website for full details: http://www.nmra2004.org/		
MAY 2005	12-15	MCR Convention	Comfort Inn, Austinburg, OH	Contact: Matt Kross e-mail mkross@earthlink.net		
JULY 2005	TBD	NMRA Nat'l Convention	TBD, Cincinnati			

Editors' Note - The Division 10 roster is still being prepared. I hope to include it in the November Lantern, next month. If you do not want your information included please contact me.

-John

Next Meeting:
Eagle Creek Library
October 5
Sunday, 2:00 pm

Program:
Bob Lawson
on Dioramas & putting
buildings into the ground

Tour:
Bill Robbins'
Sunny Point & Southern

Bring & Brag:
Commercial Structures
Industrial, businesses
& municipal



The Lantern

Published most months by Division 10
Mid Central Region
National Model Railroad Association
143 Chenault Road,
Lexington, KY 40502
jgorman@lex-ky.us
On-Line: nmra-division10.railfan.net/



STAMP

Be a NMRA
'Master Modeler'
Read all about
the NMRA
AP program
on Page 1

(See Inside)
