



# The Lantern



Volume 3 Issue 5

Division 10, Mid Central Region

May, 2001



**National  
Model  
Railroad  
Association**

*The Lantern* is a monthly publication of Division 10, Mid Central Region, National Model Railroad Association. Opinions expressed herein are those of the authors and do not necessarily reflect those of Division 10, the Mid Central Region, the NMRA, or anyone else.

### Mid-Central Region Officers

**Trustee:**

Michael C. Brestel  
3208 Vittmer Avenue  
Cincinnati, OH 45238  
513-661-2141  
mbrestel@canville.com

**President:**

Marty Vaughn  
557 Brice Road  
Reynoldsburg, OH 43068  
614-860-9023  
WmMVAughn@aol.com

**Vice President:**

Richard A. Flock  
337 Elm Drive  
Greensburg, PA 15601  
724-850-8882  
rflock@bellatlantic.net

**Secretary:**

Brian Petroziello  
6341 Silverbell Court  
Clayton, OH 45315  
937-837-7533  
bpetroz@aol.com

**Treasurer:**

Darrell C. Logan  
6322 Mid Pines Court  
Grove City, OH 43123  
614-870-1433  
djlogan@freewweb.com

### Division 10 Officers and Board

**Superintendent:**

Fred Plymale  
3463 Snaffle Road  
Lexington, KY 40513  
859-223-7270  
f729@aol.com

**Asst. Superintendent:**

Wendell Greer  
212 Southpoint Drive  
Lexington, KY 40515  
859-272-8731  
Dewvalley@juno.com

**Secretary:**

Pete Birdsong  
2308 The Woods Lane  
Lexington, KY 40502  
859-268-1462  
rrpete@prodigy.net

**Treasurer:**

Mike Armstrong  
4809 Agape Drive  
Lexington, KY 40514  
859-296-4746  
pika@gte.net

**Board of Directors:**

Mike Baskette  
922 Mason-Headley Road  
Lexington, KY 40504  
859-278-8150  
carworks@gte.net

**Board of Directors:**

Alan Brock  
1348 Prather Road  
Lexington, KY 40502  
859-269-4030  
abootguy@aol.com

**Board of Directors:**

Franklin Miller  
2024 Bridgeport Drive  
Lexington, KY 40502  
859-269-3205  
fkmiller@worldnet.att.net

**Board of Directors:**

Bob Richardson  
3433 Grasmere Drive  
Lexington, KY 40503  
859-219-1583  
Brich948@aol.com

## Message From The Superintendent

### Coal Smoke, Live Steam and a distant whistle!

It doesn't get any better than this month's tour to the largest layout in our area at J.O. Johnson's live steam track on Muir Station Road on Saturday May 12 from 1 PM to 4 PM.

J.O. expects to have his beautiful green Southern Ps4 fired up, Jim Buchanan will be running his Climax and Kelly Barnett will run his big Hudson if he doesn't have to work. Don Saager has been invited to run the neat vertical steam engine that attended last year but has not yet confirmed his availability. We hope all the live steamers will run and enjoy the day with J.O. and Div. 10 members

Last year's visit was a fun day for everyone and we want to make sure this year's tour is just as successful. Safety First and Fun Follows is the key to a successful day. Please read carefully the safety instructions included with the map to the track. The engines are hot, heavy

*(Continued on page 2)*

## Editor's Notes

What a super day in Danville. Even though it started with snow in Lexington, it turned out to be a beautiful, sunny spring day. Thanks to our hosts John Bowling, Bob Lawson, Robin Grider and all the crew at the model railroad museum, and backed up by the Grossers at John's. They all really made us feel welcome. And what great layouts, modeling, engineering, etc

Check out all of John Gorman's great tour pictures in the Photo

*(Continued on page 2)*

PAGE	Highlights & Index
<a href="#">1</a>	Officer Listing Superintendent's Message Editor's Notes Highlights & Index
<a href="#">2</a>	Company Store, "Stuff" Comm. Svc. Update
<a href="#">3</a>	Support Your Hobby Shops
<a href="#">4</a>	Super, Continued Patrons & Committee Chairs
<a href="#">5</a>	Member Profile: <i>John Bowling</i> Witless vs. Clueless
<a href="#">6</a>	Making FREDs (Flashing Rear-End Device, Not Plymale)
<a href="#">7</a>	Making FREDs (continued)
<a href="#">8</a>	Around the Bend
<a href="#">Ins</a>	Live Steam Details



Division 10 Still has several of the MCR exclusive HO scale 50's Classic Mobile Home Trailer kits in stock.

Price is \$14.95 each for one, or two for \$25.00. Add \$2.00 S&H for one kit, or \$3.00 for more than one. To order, send your check to Mike Baskette :

922 Mason-Headley Rd.,  
Lexington KY 40504

See Mike Baskette also for MCR Pins & Patches: \$3.00 each

## “STUFF” & OPPORTUNITIES

Fred Plymale and Mike Armstrong occasionally have or know of *members' overstock* situations and other opportunities to acquire “stuff.” Get in touch with them to find out if anything is currently available.

Liquidations, generally via a web auction, bear a 15 to 20% fee. Also, the Lantern is in a position to advertise your “overstock” items, for a fee of 10%. Contact Pete Birdsong to arrange for an ad, or Mike or Fred for liquidations.. Also, it's a good idea to come to the Tuesday night meetings. Quite often someone will bring in something he no longer needs, and it is usually bought on the spot.

(Continued from page 1)

and can't stop on a dime. All guests both young and more mature must follow all safety instructions.

Our clinic schedule is full through the month of July. Check the current schedule and make plans to attend another clinic by Miles Hale, Master Model Railroader in June and Paul Busse, a NMRA member and noted Garden Railroad architect in July. Model railroading is fun and even more fun when you share your time and skills with fellow members.

I hope to see you at J.O.'s and the MCR convention in Louisville later in May.

*Fred*

### COMMITTEE REPORTS

**MEMBER AID:** Joe Holbrook provided 19 hours of track and electrical assistance to 3 members, 1 former member, and 1 prospective member this month.

**COMMUNITY ACTIVITIES:** Bob Richardson has been working on obtaining information regarding NMRA members serving as Boy Scout Merit Badge Counselors and working with boys who decide to earn the Railroading Merit Badge as part of the their scouting advancement requirements. For those of you who are interested, read on.

To begin, you need to complete and submit an official Adult Application and an Information Form. (Bob Richardson has copies of both) Basic requirements are that you must

(Continued on page 4)

(Continued from page 1)

Album on the web site.

**Miscellaneous:** We've decided to start giving out Certificates of Appreciation to those who host tours, starting retroactively with January of this year. I've got them in progress, and Fred will give them out when they're ready.

**Operations Update:** The next meet is May 15. The April 17 meeting was a lot of fun, and we learned a few lessons, to boot. Don't forget to bring a Digitrax throttle if you have one.

**Funny story:** As part of the Estate Sales activity, Fred got this e-mail from the wife of a purchaser:

Subj **Re: brass wood caboose**

Date: 4/3/01 11:52:50 AM CDT

From: DICKNSEVEN

TO: F729

Hi Fred,

Since I have no clue what hubby bought this time, please send me the total amount due you. Men and their stupid trains.

Thanks,

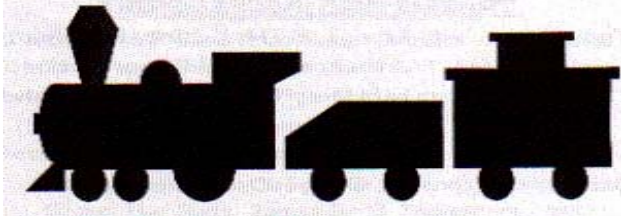
Vera

Fred's reply:

Vera:

Your very astute husband bought a beautiful D&H brass wood caboose probably worth twice what he paid for it. Send money order to....etc.

*Pete*



**Authorized Stocking Dealer:**

LIONEL - MTH - KLINE - IHC - LGB - ATLAS - BACHMAN - MRC - ARISTOCRAFT - ATHEARN - GRANT LINE - ACCURAIL - WOODLAND SCENICS - T LINE - MODEL POWER - WALTHERS - KADEE - MCHENRY - PIKESTUFF - MODEL POWER

**N - HO - 0 - G GAUGE  
ALL IN STOCK  
DRIVE OR CALL AND SAVE**

**Martin's  
Trains & Toys**

Largest Train Selection in Central KY

Tue—Fri 10—5pm;  
Sat 10—4pm

691 Teton Trail,  
Frankfort, KY 40601

www.martintoy.com  
502-223-8392

Fax 502-223-5354; toll free 1-888-461-3121

**HOBBIES FOR ALL AGES**  
... Save on Trains and Planes



**NMRA TRAIN SPECIALS!**  
Athearn 2-87-2 C&O or undec \$94.34  
Proto 2000 E6A/B Southern \$98.00  
Proto 2000 E8/E9 Southern \$59.95

**DISCOUNT PRICE:** Special on HO Ertle American Classic Collectibles @ 50% off.

**CLAYS MILL SHOPPING CENTER**  
3330 PARTNER PLACE, LEXINGTON, KY 40503  
859-296-0893 E-MAIL: flyxcell1@aol.com  
M-W-F 1:00 - 7:00 SAT 11:00 - 5:00



**BERKSHIRE TRAINS**  
Lionel • MTH • K-Line  
O • HO • N • Model Trains  
BURT BRASHEAR • Owner

**Special Orders Available**

- MTH & Lionel Complete Sets
- Track & accessories, Box Cars, T-Shirts
- Layaway available
- MC/VISA/Discover/Amex

209 Rosemont Garden  
Lexington, KY 40503  
(859) 278-8082  
FAX: (859) 873-6863

Mon. - Fri.: 1:00 to 6:00  
Saturday: 11:00 to 6:00  
Sunday: Closed



**BOOKS  
VIDEOS  
MAGAZINES  
ACCESSORIES  
COMPLETE TRAIN SETS  
SPECIAL ORDERS  
PERSONAL SERVICE**

**Dealer for brass at  
20% off retail:  
Overland Models  
Hallmark  
Key Imports**

**Garden Springs Shopping Center  
Mon-Sat 10:00 - 9:00; Sun 1:00 - 7:00**

820 Lane Allen Road Lexington, KY 40504  
859 276 4240 1 888 797 3938

**NOSTALGIA STATION**

*Recreate your childhood or see the playthings with which your parents and grandparents played. Enjoy toys, dolls, trains and railroad memorabilia in an authentic 1911 L & N Railroad passenger station.*

**CENTRAL KENTUCKY'S EXCLUSIVE AUTHORIZED LIONEL SERVICE CENTER**

- Lionel Value-Added Dealer
- In House Service and Warranty Work
- Museum Gift Shop
- Videos & Specialty Items
- Train Books & Magazines
- LGB Authorized Dealer

**Toy & Train Museum**

279 Depot Street, Versailles, KY 40383

606-873-2497

Wed, Thu, Sat 10 to 5; Sun 1 to 5

**Support Our Local Hobby Shops**

Our advertisers are supporting us with their ads, so let's support them with our business! A strong retail network is vital to keeping the hobby visible to the public, and provides valuable help to newcomers. By our patronage of their stores, they are able to continue bringing more people into the hobby, and promoting our organization.....

**win-win!!**

(Continued from page 2)

be at least 18 years old (I think many of us have this accomplished many times over!); be proficient in the area of the merit badge (Railroading - I think some of us have this under control as well); be able to work with scout age boys (ages 11-17); be registered with the Boy Scouts of America (which is accomplished by completing and submitting the forms mentioned above, along with \$7 processing fee). Once registered, you don't actually do anything until you are contacted by a boy who has decided to work towards this merit badge. (Boys need to earn 21 badges to become an Eagle Scout, and there are 120 total merit badges from which to choose.) Once you are contacted your job is to guide the boy as he plans and works through the projects and activities required to earn the badge; as appropriate, coach and help the scout through some of the activities (which in this case include such things as planning and building a model railroad); and finally, certifying that the scout has completed all requirements.

This is the Railroading Merit Badge. As such, modeling is only one aspect of the requirements. The rest of the requirements concern the area of actual railroading, which should not pose much of a problem for you, especially if you are a prototype modeler. Even better if you work in 1:1 scale!

One additional requirement is that there is never a meeting between one boy and one adult. Each boy is to bring a buddy with them, and each adult is to have a second adult present for all meetings. Also, you are registered with the scouts for only one year at a time, and therefore need to resubmit both sets of papers, and the \$7 fee annually. (The forms take about 5 minutes to

## Committee Chairs

Achievement Program	David Greer: 859 296 4313
Advertising & Programs	Open
Community Activities	Bob Richardson
Company Store	Mike Baskette
Contests	Alan Brock
Conventions & Shows	Wendell Greer
Estate Liquidations	Mike Armstrong 859 296 4746
Member Aid	Joe Holbrook
Membership	Franklin Miller 859 269 3205
Newsletter Editor	Pete Birdsong
Webmaster	Pete Birdsong

complete.) On the NMRA side of the equation, you are granted 1 time unit for each month you are registered, and one additional time unit for each scout that completes all requirements and earns the merit badge. (60 units are required to earn the NMRA Volunteer Achievement certificate.)

Community Activities Chair Bob Richardson has all information and forms. Contact him with questions and interest.

## In Appreciation....

Many thanks to our Sustaining and Patron members listed below. (Sustaining members contribute \$10.00 per year, and Patrons \$20 or more.) We encourage all members to help support *The Lantern* and our websites. A number next to a name indicates a second or subsequent donation.

### PATRONS

Mike Armstrong	Pete Birdsong
Burt Brashear	Alan Brock
Tom Brough	Harold Burks
John Gorman	John Greene
Wendell Greer	Joe Holbrook
Lou Jaquith	Skip Keyser
Bob Lawson (2)	David Mikulec
Fred Plymale	Bob Richardson
Bill Robbins	Ed Sims

### SUSTAINING MEMBERS

Jerome Baker	Mike Baskette
Dennis Brennan	Rex Childers
Richard Crane	John Daniel
John Deville	Ray Grosser
Mark Hunt	Lyman Jenkins
Ron Kercheval	
Frank Miller	Jim Mink
Bill Paulsell	Frank Randall
David Reed	Richard Rink
J. Roberts	Wes Ross
Ron Saylor	John Stokes

## MEMBER PROFILES

## John Bowling



John Bowling lives at "Twin Hollies" on Maple Avenue in Danville, with his wife of 38 years, Mary Joe. They have three children and five grandchildren.

He moved to Danville in 1968, opened his first restaurant, and now he and his partner have 16 Arby's. He's been in public service for 17 years, 13 as Mayor of Danville, and now as a State Representative in the Kentucky General Assembly.

John's train memories start in New Hope, near Bardstown, where he grew up, catching L & N trains for shopping trips to Louisville with his mother at 6:00 am on Saturday mornings. (*I'd say from what I saw of his layout, John still likes to shop -ed*) He remembers being in "seventh heaven" riding the green coaches, after watching the steam engines come to a stop, and being helped aboard by the conductor. He would watch the L&N trains for hours on the Louisville/Corbin line.

Since 1962, John has been collecting and modeling (the L&N, of course!) His present layout is in a building erected specifically for his railroad, which measures 25 by 40 feet, and is designed for operations. The scenery is of Central & Eastern Kentucky, and Control is by Digitrax DCC.

John wishes to thank all those who have helped make the layout a reality,

# Witless vs Clueless

## *Rivets O'Reilly and Larry Loungecar* "Garden of Eden"

**Rivets:** Hey, Larry, what's goin' on?

**Larry:** I tell ya, Rivets, I've taken your advice big time.

**Rivets:** Uh-Oh! I mean, uh, which advice is that, Larry?

**Larry:** I'm talking about your advice to think big, Rivets. I'm really into it.

**Rivets:** So what big project are you getting' into, Larry?

**Larry:** I'm doing Garden Railroading, and I mean big-time!

**Rivets:** How do ya mean, Larry?

**Larry:** Well, first of all, I'm hirin' Paul Busse to do the design.

**Rivets:** That's a good start; what else? How big is the layout gonna be?

---

especially Ray and Renee Grosser. It is his dream layout, and he welcomes all to share it with him.

In addition to his model railroading, John also enjoys golf and traveling.

He is certainly an asset to the NMRA, with a first class, "dream" layout, but more important, he is a willing and gracious host, and genuinely seems to enjoy sharing his layout with us. And watching him running some of his consists during the tour in April, anyone can see that he genuinely loves running trains. (Especially L&N!)

**Larry:** Well, just to give you some idea, I'm hiring a bulldozer and backhoe to do the grading.

**Rivets:** Wow, this does sound big, Larry. What else?

**Larry:** You know how they've been talkin' 'bout raising lock & dam 10 on the Kentucky River? Well, I'm writin' to the Corps of Engineers, to see if they can just divert the whole river to run through my back yard!

And I'm gonna get R. J. Corman to lay the track.

**Rivets:** Larry, you idiot! You don't have the kind of money it takes to do all that. And your back yard isn't big enough.

**Larry:** Well, it all worked on paper when I drew it out.

**Rivets:** No doubt. What about the money?

**Larry:** Hey, Rivets, can I borrow a few bucks from you until payday?

**Rivets:** I don't think so, but when's payday?

**Larry:** How should I know...you're the one with the job. And you're callin' me an idiot?

# Building a FRED

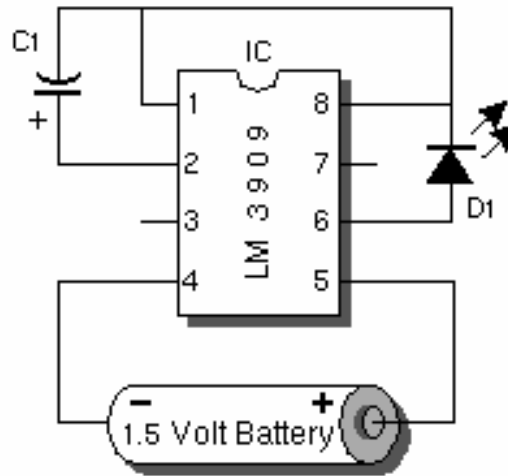
by John Hill (1-Dec-96)

Are you looking for a quick and easy way to draw a little more attention to those long slow trains you've worked so hard on? How about building a simple little FRED (Flashing Rear-End Device) to put on that last car. It'll not only grab the attention of the Rail fans out there admiring your train, but also help the engineers know whether or not they've lost a few cars somewhere along those vast scale miles of NTrak modules.

An inexpensive FRED can be built with a few basic parts, all of which are available at your local Radio Shack store. The device consists of a single 8-pin IC (Integrated Circuit), a capacitor, an LED (Light Emitting Diode), and a small 1.5 Volt battery (see the parts list below). A device such as this should run continuously off a small watch battery for about 3 months, or a small "N" size battery for about 6 months.

A schematic diagram of the circuit is shown in *figure 1*. I usually just solder the capacitor and LED directly to the IC, but if you're worried about burning out the IC while soldering you can use a small 8-Pin Dip socket to solder these components to. Then simply plug the IC into the socket after you're finished. Make sure you note which pin on the IC is pin one. The diagram below is drawn to represent a view looking down at the top of the IC, and pin 1 is located to the left of the notch in the IC.

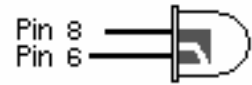
Start by attaching the capacitor C1 to the IC at pins 1 and 2.



*Fig. 1 - A Simple LED Flasher Circuit*

Make sure the negative lead, which is usually clearly marked on the body of the capacitor, is connected to pin 1 and not pin 2. I use a 220 uF Electrolytic capacitor which results in about a 1 second flash rate. You can use a larger (330 uF) or smaller (100 uF) capacitor to get a slower or faster flash rate respectively. While doing this I also go ahead and solder pin 1 to pin 8 on the IC using a short piece of wire.

When connecting the LED D1 to the IC you may want to first solder a couple of short pieces of flexible wire to the leads in order to provide greater flexibility later on while positioning the LED on the car body. Make sure you connect the longer lead of the LED to pin 6 of the IC, and the shorter lead to pin 8. See *Fig. 2*. If the leads on your LED are the same length then hold the LED up to a bright light and compare the internal component shapes to *figure 2* to determine which pin to connect each lead to. The final step to get a working circuit is to connect a battery



*Fig. 2 - Connecting the LED to the LM3909.*

to the IC. I prefer to use an "N" size battery whenever space permits (which is just barely for an Atlas Caboose and no problem for just about any box car) and therefore like to use a small bat-

tery holder which comes with the leads already attached (see Optional Parts listed below). If you need to use a small watch battery, or prefer not to use the battery holder, you can simply use some electrical tape to tightly tape the ends of two pieces of wire to the battery, making a sort of a home-made battery holder.

**DO NOT ATTEMPT TO SOLDER WIRES DIRECTLY TO THE BATTERY!!!**

Connect the battery lead wires to pins 4 and 5 of the IC making sure the negative battery lead (black on the battery holder) is connected to pin 4 of IC and the positive battery lead (red on the battery holder) is connected to pin 5. Now place a battery in the battery holder or tape the power leads to your watch battery and the LED should start flashing. If the LED does not flash, check that the LED leads are connected to the correct pins and that the

*(Continued on page 7)*

(Continued from page 6)

capacitor is connected with its negative lead to pin 1. Also make sure you connected pins 1 and 8 of the IC together.

Now you need to mount the circuit inside that last box car on your train. I usually position the LED directly above the coupler, high enough not to interfere with coupling for those times when this isn't the last car of the train. I cut two fine slots spaced apart the same width as the LED leads a short way up the end of the box car with an X-Acto razor saw, going up just enough so that the LED sits at the proper height and the LED leads clear the underframe where they go inside the box car. If your box car frame is metal or has a metal weight in the bottom you may have to put down a small piece of electrical tape to keep the circuit from shorting out.

Lastly, I shape and paint the LED. Shaping the LED is not really required, but the LEDs available from Radio Shack are a little big for N scale. They don't carry the really small ones any longer so I file down the shape of the LED just a bit to square it off some before I paint it. This gives the impression of a black box with a red lens mounted above the coupler. *Figure 3* shows the shape I file. Make sure you don't file into the internal components of the LED and destroy it. The LED leads and shaded regions are then painted black.

Something else you may want to

try is to include either a slide switch mounted through the bottom of your box car or a magnetic reed switch mounted inside the box car which allows you to turn the circuit off and on. A magnetic reed switch allows turning the FRED off or on without a five finger assist but they can be finicky. The switch should be connected between the positive battery lead and pin 5 of the IC.

I hope you enjoy making one or more FREDs for your own trains, and please feel free to ask me any questions you may have about the circuit via email. It can also be used to model other items like flashing strobe lights, caution lights, or even highway



*Fig. 3 - Shaping a large LED.*

construction blinkers. Just change the color of the LED to yellow or green and you're all set.

If you have any questions or comments please send email to John Hill.

**hill@ais.net**

**See John's very informative web site at**

<http://www.cl.ais.net/hill/john>

### Parts List from Radio Shack

Part	Description	Catalog No.	Price	Notes
IC	LM 3909 LED Flasher	276-1705	\$1.89	
C1	220 MFD Electrolytic Capacitor	272-956	.99	
D1	Red LED	276-026	.99	2/pkg
B1	N" Battery	23-023	1.79	2/pkg

### Optional Parts

Description	Catalog No.	Price	Notes
"N" Battery Holder	270-405	.79	recommended
Watch Battery	various	1.99 - 2.29	
Slide Switch	275-409	1.39	2/pkg
8-Pin Dip Sockets	276-1995	.59	2/pkg
	276-1988	1.39	2/pkg

## AROUND THE BEND...

### May

**May 4—12:** Smoky Mtn. Rail fest: SER Convention in Knoxville.

**May 11:** BGRRC 7:30PM, Meadowthorpe Community Center, Lexington, KY: Presentation by Lou Jaquith

**May 12 (SATURDAY!):** NMRA MCR Div. 10, 1:00 pm: **LIVE STEAM!** A day of fun at the J.O. Johnson farm. You'll get an opportunity to operate live steam 1 1/2 "foot scale. It doesn't get much better than this!

**May 17-20:** MCR convention: *The Thoroughbred Express*, in Louisville. Link to their site from our web page.

### June

**June 3:** NMRA MCR Div. 10 , 2:00 pm Beaumont Library, Lexington, KY. Program by MMR Miles Hale on RR hand signaling, and use in Operating sessions .First Bring-n-Brag, Engines theme  
Tour: Alan Brock

### July

**July 1:** NMRA MCR Div. 10 , 2:00 pm, Beaumont Library, Lexington, KY. Program by Paul Busse: clinic on Garden Railroading.  
Tour: to be determined.

**July 8-15:** NMRA National Convention and National Train Show in St. Louis, MO. Link to their site from our web page.

**July 27-28:** LCCA National Con-

vention, Lexington Civic Center.

### August

### September

**Sept. 14 -16:** NMRA/Pride in Pulaski *Railroad Days* in Somerset



# The Lantern

Published most months by Division 10  
Mid Central Region  
National Model Railroad Association  
2308 The Woods Lane,  
Lexington, KY 40502  
rrpete@prodigy.net  
On-Line: <http://nmra-division10.railfan.net/>



STAMP



*Do I Like Trains? (See Inside)*



# **SAFETY---LIVE STEAM OPERATION**

## **SAFETY FIRST- FUN WILL FOLLOW**

SAFETY IS A MUST WHILE OPERATING AND RIDING ON THESE TRAINS. The LIVE STEAM is just as HOT as the big ones and it will burn or scald you.

The locomotives weigh in from 500 to 1200 pounds and WILL NOT STOP like an automobile. The trains with people riding can weigh in at 1 1/2 to 4 tons depending on loco size, number of cars and people on board. Your foot cannot stop this load and you could be injured if you were to try. Please don't.

### **BASIC NON NEGOTIABLE SAFETY RULES WE MUST FOLLOW:**

**NO RUNNING  
CARS**

**KEEP HANDS AND FEET IN**

**DO NOT DRAG FEET  
CARS**

**DO NOT LEAN OR ROCK IN**

**DO NOT GET ON OR OFF A MOVING TRAIN**

**WHEN OPERATING AN ENGINE OR RIDING IN A CAR, ONE MUST INSIST THESE SAFETY ISSUES ARE FOLLOWED.**

**NOTICE: Bluegrass Model Railway Supply has moved to another store at the same address. They are now in the old computer store, still at Garden Springs Shopping Center, 820 Lane Allen Road.**

