



THE LANTERN



JANUARY 2018 VOLUME 20 ISSUE 1

Superintendent's Report

Note: The January Division meeting on the 7th will be at the Eastside Branch of the Lexington Public Library – usual start time of 1:30PM. The clinic is on North American Brake systems by **Bruce DeMaeyer** and we will have the Division T-Trak layout displayed with all the extensions in the MakerSpace room upstairs where we'll be meeting.

Well, the New Year is upon us. I've been wondering what to write about – I guess this is the procrastination effect of passing age. Just kidding – well – not so much. Then the thoughts moved on to what is in the 2018 year ahead for the Division. It looks like we are going to have some very interesting activities coming up. I have scheduled a Division Board of Director's meeting later in January where Bruce and I will present the tentative calendar as well as get some committee reports. We are going to try to target some plans out through the Summer/Fall on the agenda. Whoopee – administrative details.

Have you checked out our Division's Facebook page yet? Enter 'facebook.com' in your browser and then 'NMRA.MCR.Div10' in the facebook searchbar – you won't need a facebook account to see our page.

Last month I rambled on about ideas – sources/ inspirations/etc. Now is the time to start prioritizing those ideas and starting to get them in work.

We have a good lead time for the Cincinnati 2018 MCR Convention to be working on getting contest models ready – you know who can do them. Besides, this is a good time to work on Merit Awards for your AP. There look to be some really great clinics scheduled as well as operating sessions and layout tours set up by Division 7 for the Convention. <http://www.cincy-div7.org/convention.html>

I got my registration and reservations in a month or so ago. Plus, West Chester, Ohio is just a hop/skip/jump from Lexington. The next MCR Conventions in Youngstown in 2019 and Pittsburg in 2020 are quite a bit further away. Let's all go for a good Division 10 representation at the Cincinnati Express.

How about what is going on with your layout (to be a bit repetitive from last month)? Have you recently done a quality check on the rolling stock? There was a recently a good tune-up article in MR. Same goes for track work – how about that pesky turnout or switch machine? If you have signals are they working the way they should? Maybe there are some upgrades due for your control system or wiring. Are all the CV's up to speed in the programmers and matched if necessary? Are there any balky engines that may need attention? For me, one job jar item is to get better DCC boards in several of the older locomotives. Just as another aside – seems to me the national magazines (printed and electronic) have had a few more 'how to model' articles in the last couple months – good for them. I must apologize for rambling – bit under the weather as I write this on Christmas Eve. I hope everyone has had a Merry Christmas and hope for a Happy New Year in model railroading.

— Bob Belt

FINE SCALE MODEL RAILROADER EXPO

Hank Sneed and I traveled to Altoona, Pennsylvania, to attend this Expo on November 3rd & 4th, which was devoted to structure building. It was an excellent event, and the clinicians were first rate.

We did not attend the first day which was devoted to extra fare sessions where you would build something and take it home. We attended the next two days of clinics. Two were offered each hour, so you had to make choices.





For the NMRA MC Region officers link to www.midcentral-region-nmra.org/bod2.html

The Lantern is a monthly (except July) publication of Division 10, Mid Central Region (MCR), National Model Railroad Association. All opinions expressed herein are those of the authors, and do not necessarily reflect those of Division 10, the MCR, the NMRA, or anyone else.

In Recognition...

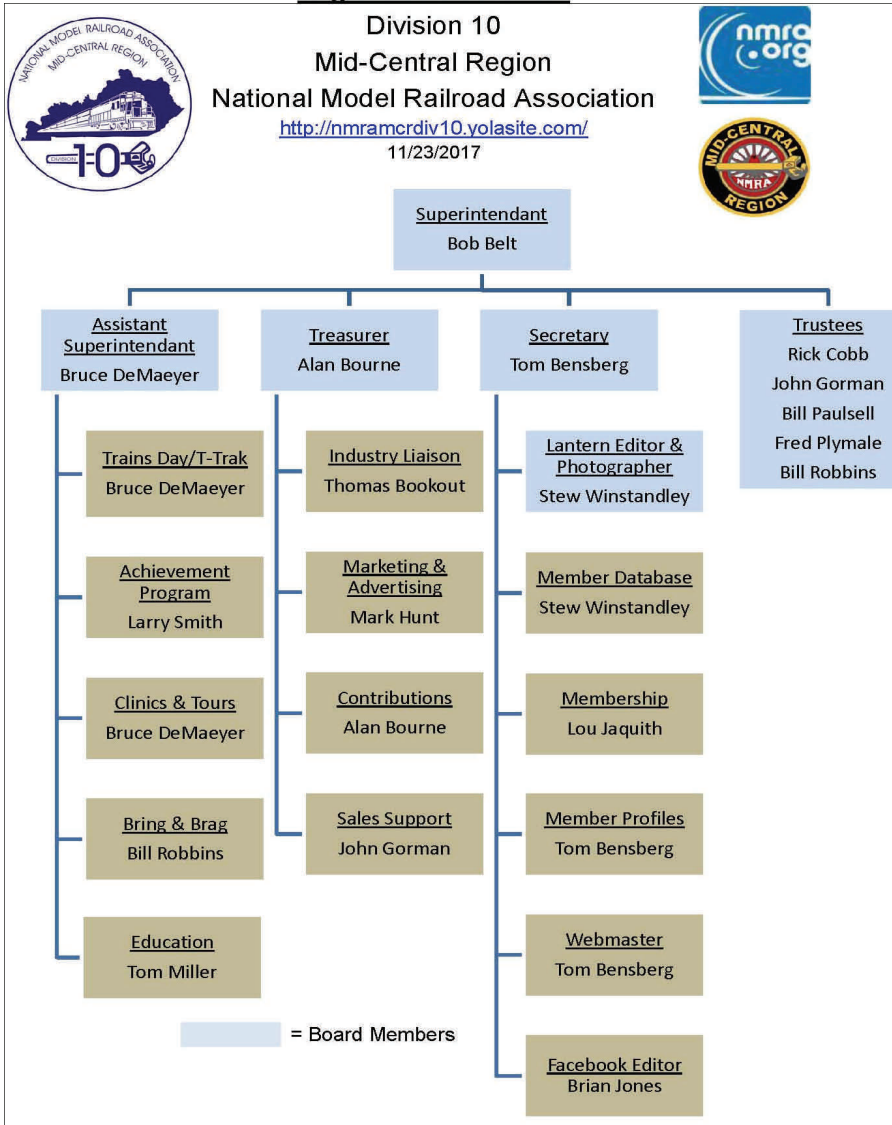
Many thanks to folks listed in the column below. They have given their support for our club. We encourage all NMRA members to help with financial support to *The Lantern* and our website and the Division 10 activities. **Send your monetary contribution to our Treasurer.**

To be listed here your contribution needs to be at least \$20 in cash, or material valued at \$50, or a total of 20 hours time within the last year. Division 10 receives NO monetary support from the NMRA or the MidCentral Region. Div.10 is recognized by the US government as a 501c3 corporation and your cash or material donations may be tax deductible.

Report materials or time to Stew Winstandley. To the right of each contributing member's name is the month of his or her latest contribution. Whenever one makes a contribution of money, material, or time, his or her date will be updated, and for new contributors, their name will be added. Anyone not making a contribution within 12 months will be dropped .

Tom Krill	10/17
Bob Ferguson	"
John Bowling	"
Lou Jaquith	"
Bill Marshall	9/2017
Clyde Burberry	"
David Batin	"
Ken Dickey	"
Harold Weinberg	"
Chester J Myers	5/2017
Raymond Cox	4/2017
Randy Coffman	2/2017
Paul Evans	12/16
	"

Mark Hunt— paper and copying of printed materials
 Fred Plymale—Slide Projector
 John Gorman
 Alan Bourne—Treasurer's materials



Division 10 Treasurer's Report: Nov. 1, 2017—\$12,631.59; Expenses: Lantern 19.60, Trains Day at Library 20.85; Deposits: 0.00; Balance: Nov. 30, 2017—\$12,591.14. Give or send your contribution to Alan Bourne, 438 Queensway Dr.. Lexington, KY 40502

On the internet, link to <https://www.facebook.com/NMRA.MCR.Div10/>
 and <https://nmramcrdiv10.yolasite.com/>
 and <http://ttrak.wikidot.com/nmra-mcr-division-10-the-kentucky-division>

Continued from page 1: The first day we attended clinics on *Building Resin Vehicles*, where the clinician described building three different REA truck kits; *Scratch Building Structures*, which focused on the finished product; *Rust Techniques for Your Scale Models* using a variety of products; and *Realistic Scenery Techniques*, in which the clinician took a piece of O Scale track, painted it black, then painted the ties white, weathered it with chalk, and planted weeds on it. It looked fantastic when it was finished.

Later Hank attended a clinic on *Using Old Postcards for Modeling Reference* which he said was very good. I attended one on *Structure Lighting with LEDs*. The electronics of it were pretty complicated, somewhat above my intellectual level.

A vendor room opened at noon that day and it was a real trap. They had craftsman kits, detail item parts, and things that you would never find in a hobby shop. My wallet emptied quickly.

The second day began with *Structures and Details*. This was the best clinic of all. The clinician was a professional artist and it showed in his work. He stressed the importance of planning ahead. Where I would throw a pile of junk together, he stressed finding a reason for every piece and its location. Everything this man built looked museum quality. His structures were amazing. He gave tips on painting, weathering, color selection, even glue.

The next clinic was on *Board by Board Construction* which included lots of tips including staining, painting, and using Formula 560 glue, which is canopy glue. Another costly visit to the vendor room followed. The afternoon began with a clinic on *Detailing and Details*. There was an emphasis on texture, color, shading, highlights, and composition.

This was followed by a clinic led by Doug Foscale, a manufacturer of craftsman kits, on *Improving Structure Kits Through Design*. There was an emphasis on the placement of structures on the layout using a variety of roof designs to provide variety. Other features included a contest room, displays, and a dinner in the evening which was an informal fun event when contest awards were given. I sat next to a man who completed the Achievement Program in 18 months. It took me seven years! Both of us thought it was a very valuable two days which took our layout ambitions to a new level.

— Bill Paulsell

Division 10 T-Trak Update

<http://ttrak.wikidot.com/nmra-mcr-division-10-the-kentucky-division>

On the above website page you will find a listing of Division 10 T-Trak members, and a listing of events in which Division 10 T-Trak modules will participate. The current state of the modules will be on display at the January 7th meeting. Note the January branch library location on pg. 4.



Above photo is from the **Mile-HI-Railroad's** Denver and Rio Grande Western Railroad - The Moffat Tunnel Subdivision, Main Line Through the Rockies in HO Scale.

THE LANTERN
NEWSLETTER FOR NMRA MCR DIVISION 10

210 BRANNON RD.
NICHOLASVILLE, KY 40356-9711
WWW.DIV10-MCR-NMRA.ORG



JAN. 7, 1:30

EASTSIDE BRANCH LIBRARY

BRING AND BRAG

CARS SHOWING BRAKE SYSTEMS

MEETING AGENDA

AIR BRAKE SYSTEMS, BRUCE
DEMAEYER

TOUR

DIVISION 10 T-TRAK MODULES
AT THE EASTSIDE LIBRARY

AROUND THE BEND

MON.	DAY	HOST	PLACE	EVENT / PROGRAM	TOURS	BRING & BRAG
Jan.	7	Div. 10	Eastside Branch Library, upstairs; 3000 Blake James Dr., 40509	North American Air Brake Systems, Bruce DeMaeyer	Div. 10 T-Trak layout at library	Railroad Cars with brake systems
Jan.	20-21	Great Train Show	Kentucky Exposition Center, Louisville	Train Show, 10—4	N scale T-Trak layout	Div. 10 T-Trak modules will be included in the layout
Feb	4	Div. 10	Tates Creek Library	Layout Filming Project, Bob Ferguson	None	Steam Engines
March	4	Div. 10	Beaumont Library	Smart Phone Throttles, Mark Underwood		Cabooses
April	7	KRM	St. Catherine Academy, New Haven, Ky.	Train Show & Sale	N scale T-Trak layout	Div. 10 T-Trak modules will be included in the layout